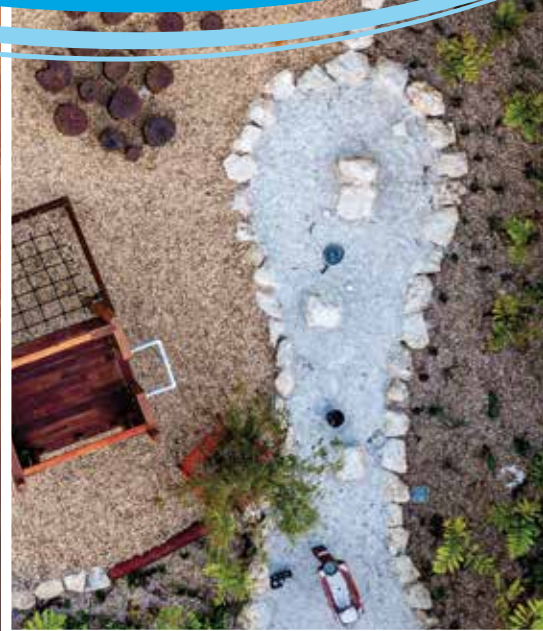


# Business Plan 2022-2024



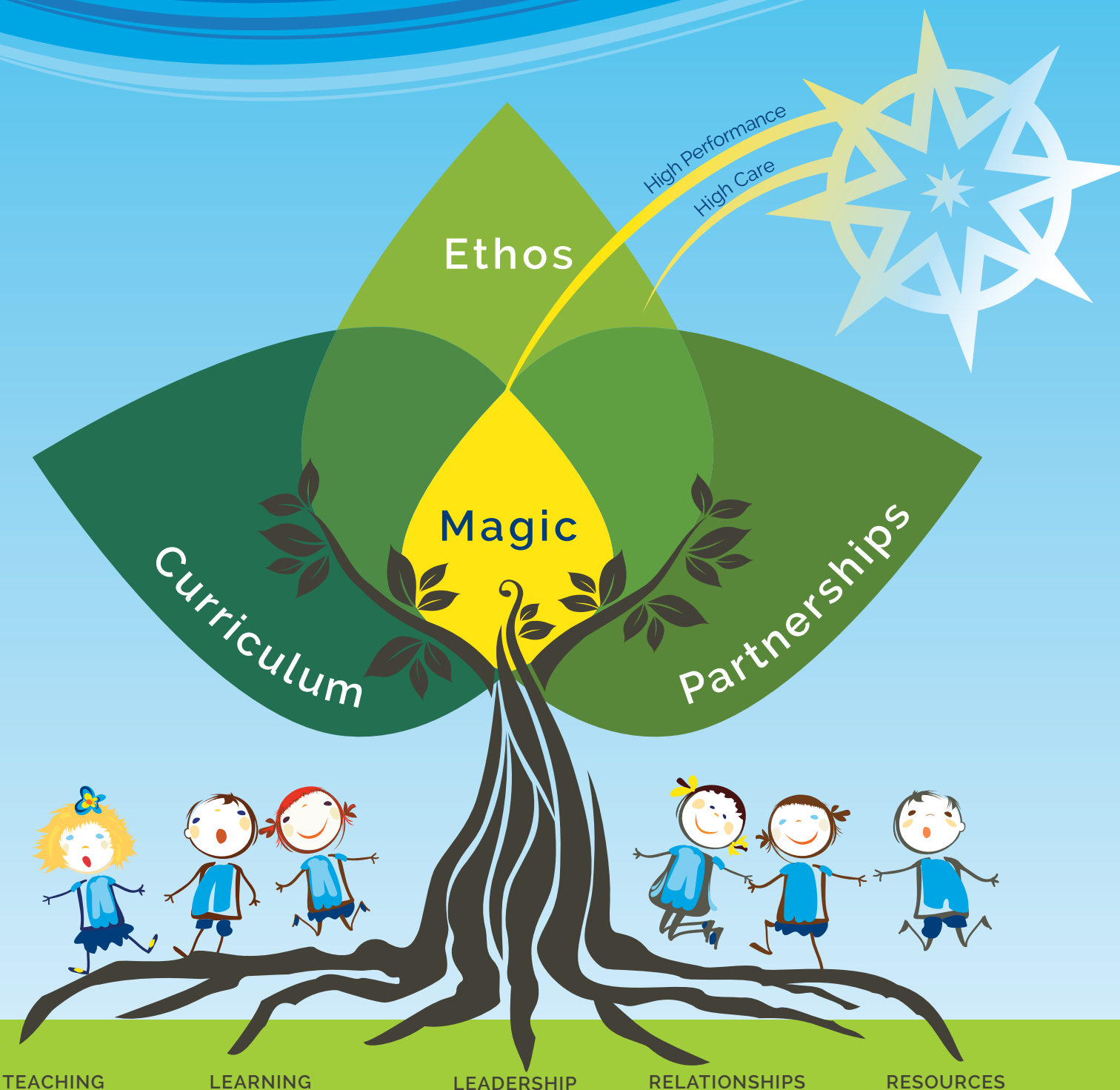
**Comet Bay**  
PRIMARY SCHOOL

Growing Together





**Comet Bay**  
PRIMARY SCHOOL



## School Review Framework

KEY FOCUS AREAS



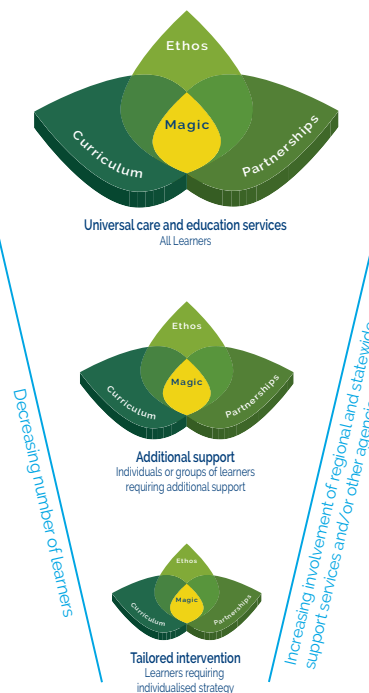
The 2022-2024 Business Plan was developed in collaboration with the Comet Bay Primary School staff and the School Board. The Business Plan is the guiding document that all decisions, structures, profiles and resources will align with over the next three years. The Business Plan is supported by Priority Plans in the areas of English and Mathematics, and Operational Plans for Student Services and all other curriculum areas. These plans provide fine detail planning that support the achievement of the Business Plan's targets and milestones and are the link between classroom planning and the overall strategic direction set out in the Business Plan.

### Moral Purpose why we are here

To create a safe and engaging learning environment that encourages a love of learning.

### Health Promoting Schools Framework

A Health Promoting School is a school that is constantly strengthening its capacity as a healthy setting for living, learning and working. It implements policies and practices that respect an individual's wellbeing, provides multiple opportunities for success, and acknowledges good efforts and intentions as well as personal achievements. The Health Promoting Schools Framework is used within our school planning to describe the inter-connectedness of Curriculum, Ethos and Partnerships within our school. The following diagram is a model that features in many of our planning models.



### School Context

Comet Bay Primary School is a Level 6 school serving families in Secret Harbour. The school is part of the South Metro Education Region, the South Peron Network and the Comet Bay Professional Learning Community (CBPLC) which includes Comet Bay College, Golden Bay and Secret Harbour Primary Schools. The school is set across two sites, the main campus on Miltna Drive and the Early Childhood Annexe located just over 2 km from the main campus on Surf Drive.

Comet Bay Primary School has embraced its motto of 'Growing Together,' ensuring parents and the school work together to improve student outcomes.

Comet Bay Primary School has an ICSEA (Index of Community Socio Economic Advantage) of 1014, with the average across Australia being 1000. When 'like school' comparisons are referred to in this document they are made against schools with a similar ICSEA.

Strategic Intent

Within the Health Promoting Schools Framework there are three key objectives.

1. Ethos and Learning Environment

Ensure all students feel safe, cared for, valued, and develop into resilient young individuals.

2. Inclusive Curriculum and Pedagogy

All students achieving their potential through excellence in teaching and learning.

3. Partnerships

Working collaboratively with all stakeholders in the school and wider community to improve student outcomes

At Comet Bay PS you will:

See



Engaged, enthusiastic, inquisitive and responsible students working and playing together as part of our school community. Committed staff providing rich learning opportunities in a safe environment. Collaboration, creativity, smiles and pride in our school, all underpinned by a consistent and contemporary teaching approach.

Hear



Politeness, welcoming tones, laughter and a sense of belonging within our whole school community. Decision making, questioning, collaboration and explicit vocabulary throughout the school, supported by self-reflection, feedback, praise and encouragement.

Feel



A welcoming, energetic, productive and calm atmosphere with a sense of connection and pride. Acceptance, appreciation and respectfulness all underpinned by a sense of achievement. All stakeholders will feel valued, supported and safe.

We aim to achieve this through:

- Supporting committed and professional staff to be reflective and innovative.
- Using an evidence based approach to meet the needs of our students.
- Engaging in a continuous cycle of self-assessment and improvement.
- Embracing the Tribes social model to maintain a safe and supportive learning community for all students and staff.
- A commitment to our Comet Bay Agreements.
- Leadership across all levels of the school.

Shared Staff Beliefs

The staff makes decisions and develop strategies within the school based on the following shared beliefs:

- All students have the capacity to be successful
- Increasing staff capacity positively impacts student outcomes
- The needs of the whole child must be supported, nurtured and developed
- Critical and creative thinking, plus the Comet Bay Learning Dispositions prepare students for a successful future
- A strong home/school relationship enhances the potential outcomes for the child

Key Focus Areas

	Milestones
Reading	• Ready to Read is occurring regularly throughout the school.
	• SHARP reading is occurring regularly in P/1 classes.
	• Guided Reading coaching occurs with new staff within the first 6 months, and all staff receive coaching on a 2-year cycle.
	• Guided reading is occurring at least 4 x per week as per the Comet Bay Way expectations.
	• Progress is being made towards achieving our Comet Bay Way reading targets
	• Sight words mastery occurring at home, facilitated by P/1 classrooms. .
	• Support a Reader Program (SARP) occurring in classrooms
Critical and Creative thinking	• All classes are actively engaging with the Innovation Challenge. s.
	• The 6 D's are being integrated across learning areas.
	• The Comet Bay Learning Dispositions are used to support critical and creative thinking.
	• Teachers are progressing along the CBPLC HOT Development to Mastery scale.
Early Intervention	• Staff have a shared understanding of critical and creative thinking.
	• Provision of parent information opportunities (pre-kindy through to Yr 2
	• Kindy referrals are followed up in pre-primary.
	• Maintain partnerships across the CBPLC
Staff Capacity Coaching, observation, feedback	• Increased participation in our Community Story by families.
	• Verified as meeting all 7 Quality Areas in the National Quality Standards
	• All staff have an opportunity to meet with their coaching partners twice a term.
	• Performance and development goal check-ins are occurring.
	• AITSL standards are being used to support self-reflection.
	• Classroom observations are providing targeted feedback for teachers.
	• Staff are seeking and engaging in peer and class observations.
	• Coaches working alongside teachers in classrooms.
	• Collaborative meeting sessions occurring regularly, with a focus on teacher impact and effectiveness.
	• Meetings have a strong focus on teacher efficacy, student progress, use of available data.



# 1 Ethos and Learning Environment

Ensure all students feel safe, cared for, valued, and promote resilient young individuals.

The following strategies will be implemented in order to achieve our targets;

## Teaching

- Staff model and set high expectations and standards.
- Staff to engage in coaching and observation opportunities and collaborative learning groups.
- Strengthen the digital fluency of staff and students.

## Learning Environment

- Enhance opportunities for students to participate in pastoral and emotional care programs.
- Support staffs' health and well-being to achieve a healthy and productive environment.
- Maintain the common language of our Comet Bay Agreements and Dispositions.
- Strengthen the use of our Tribes social model.

## Leadership

- Review, refine and communicate leadership roles and responsibilities to all staff.
- Induct new staff in structures, processes, school plans and expectations.
- Maintain distributed leadership structures to provide leadership opportunities for staff.
- Embed a culture of self-reflection and continuous improvement across the school.

## Relationships

- Maintain positive and inclusive relationships with parents and care givers.
- Provide support and individualised interventions for at risk students.
- Support a proactive approach to attendance and engagement.

## Targets

- > Each year, 70% or above of our Year 4-6 students will be participating in our BYOD program.
- > Each year, the percentage of students with regular attendance (90% or greater) will exceed that of 'like schools'.
- > Annually, we will achieve positive perceptions from students, staff and parents, relative to our 2021 results, in the National Schools Opinion Survey.





## 2 Inclusive Curriculum and Pedagogy

All students achieving their potential through excellence in teaching and learning.

The following strategies will be implemented in order to achieve our targets:

### Targets

- > By 2024, the NAPLAN reading achievement will exceed the state average for Year 3 and 5.
- > Annually, the NAPLAN numeracy achievement will exceed the state average in Year 3 and 5.
- > Increase the percentage of Year 3 and Year 5 students who achieve in the top bands against the 'state' in Reading annually.
- > By Year 3, 90% of students who were identified as scoring below the state median in the on entry reading assessment will be above the NAPLAN national minimum standard.
- > By Yr 2, 75% of students who were identified as scoring below the state median in the on entry reading assessment, to demonstrate average or above average progress from Module 1 (PP) to Module 3 (Yr 2).
- > The percentage of Year 3 and Year 5 students (stable cohort), with high to very high progress in NAPLAN Reading, to exceed that of 'like schools' annually.



### Teaching

- Focus on whole school approaches and explicit teaching in English and Mathematics as outlined in the Comet Bay Way. n
- Reflect upon AITSL Teacher Standards to support and improve teacher performance.
- Use student data to inform the impact of teaching / programs on student learning.
- Increase student knowledge, understanding and responsiveness to Aboriginal culture.
- Enhance our 'assessment for learning' focus to direct future learning.

### Learning Environment

- Provide and grow opportunities for staff to work collaboratively.
- Utilise whole school structures as outlined in the Comet Bay Way.

- Continue to provide opportunities for project based learning, including our Innovation Challenge.
- Extend students learning during incidental experiences and teachable moments, including those in the outdoor environment.

### Leadership

- Ensure access to coaching, observation and feedback for all staff.
- Provide targeted extension and intervention programs.
- Increase teacher awareness and capacity to embed Aboriginal culture into everyday learning opportunities.

### Relationships

- Engage with the CBPLC to further develop critical and creative / higher order thinking within our school.





# 3 Partnerships

Working collaboratively with all stakeholders in the school and wider community.



## Partnership Objectives

- > Increase the number of parents engaging in our school programs (Ready to Read, CB Kitchen Garden, Community Story time, Support a Reader).
- > Encourage and support an effective and active P & C in supporting and promoting connection and inclusivity in our school and wider community.
- > Support and engage with the direction of the Comet Bay Professional Learning Community (CBPLC) and the Peron South Education Network.

The following strategies will be implemented in order to achieve our targets;

### Teaching

- Provide opportunities that align with the aspirations of our families and community.
- Promote our current programs to engage families in the classroom.

### Learning Environment

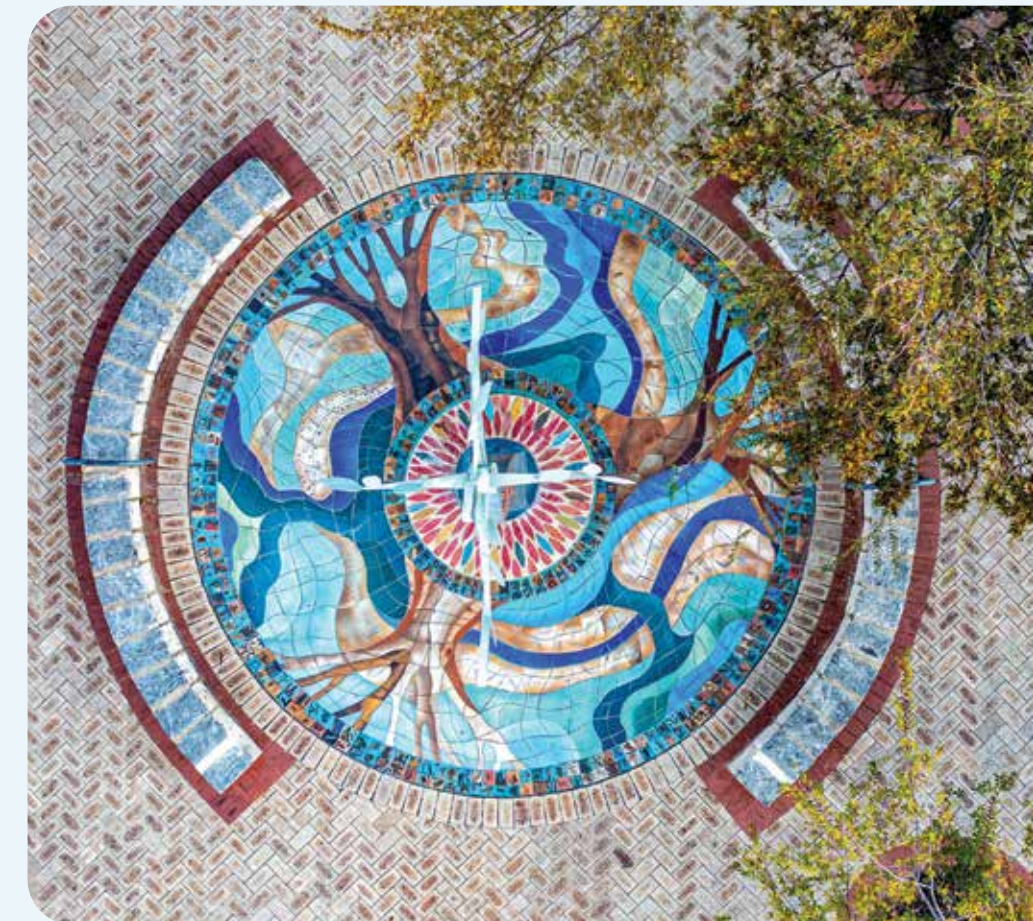
- Provide an open, welcoming, inclusive environment for the school community.
- Provide opportunities for authentic student decision making over matters that affect them.

### Leadership

- Maintain strong School Board and governance processes to ensure school direction and decision making reflects community expectations.
- Seek feedback through our annual National School Opinion Survey to gauge community perceptions.

### Relationships

- Maintain a positive, productive and responsive relationship with our P & C.
- Communicate regularly via various platforms to engage and inform our community.
- Create opportunities to build relationships with prospective families in our community, focussing on the 0-4 age group.







**Comet Bay**  
PRIMARY SCHOOL

85 Miltona Drive,  
Secret Harbour WA 6173

Tel: 08 9524 9033  
cometbay.ps@education.wa.edu.au

[www.cometbayps.wa.edu.au](http://www.cometbayps.wa.edu.au)

